

# **What qualifications do I need - *to join* IHE ? - *for* Engineering Council ?**

# Institute of Highway Engineers

## What qualifications do I have?

## To join IHE

## \*For Engineering Council Registration (See below for \*)

---

MEng

Accredited BEng (Hons) started <1999

Engineering honours degree started <1999

Equivalent overseas qualification (Ask IHE for a Career Assessment – see page 5 - after a NIRAC assessment)

Apply for Member if you have  $\geq 2$  years experience

(OR, Graduate Member if less experience)

✓ **OK for CEng (and IEng)**

But, check qualifications and accreditation dates

[www.engc.org.uk](http://www.engc.org.uk)

[www.jbm.org.uk](http://www.jbm.org.uk)

---

BEng (Hons) started  $\geq 1999$

Apply for Member if you have  $\geq 2$  years experience

(OR, Graduate Member if less experience)

✓ **OK for IEng**

Top up for CEng with:

MSc or MBA

Work-based Further Learning (WBL)

Employer provided work-based learning approved by JBM

---

Honours degree in engineering (BSc)

started  $\geq 1999$

Apply for Member if you have  $\geq 2$  years experience

(OR, Graduate Member if less experience)

✓ **OK for IEng**

Top up for CEng with:

Technical MSc

Work-based Further Learning

Employer provided work-based learning approved by JBM

---



## What qualifications do I have?

## To join IHE

## \*For Engineering Council Registration (See below for \*)

---

Cognate honours degree in science or technology  
(Ask IHE for a Career Assessment first to decide if is  
'cognate' – see page 5 below)

Apply for Member if you have 2 years' experience  
(OR, Graduate Member if less experience)

Top up for CEng with:  
Technical MSc  
Work-based Further Learning  
Employer provided work-based learning approved by  
JBM  
Top up for IEng with:  
Bath HOT certificate  
HNC  
UWE or NTU certificate in Traffic Engineering

---

Senior Incorporated Engineer with significant senior  
technical experience

Apply for Fellow

Top up for CEng with:  
Technical MSc  
Work-based Further Learning  
Employer provided work-based learning approved by  
JBM

---

Ordinary degree in engineering (300 credits)

Apply for Member if you have 2 years' experience  
(OR, Graduate Member if less experience)

✓OK for IEng

---

HND or HNC in engineering started <1999

Apply for Member if you have 10 years' experience  
Apply for Fellow if you have 15 years' experience (5 at  
senior level)

✓OK for IEng



## What qualifications do I have?

## To join IHE

## \*For Engineering Council Registration (See below for \*)

---

HND or Foundation Degree in engineering started ≥ 1999	Apply for Graduate Member OR Associate Member if you have 5 years' experience OR Member if you have 10 years' experience	✓OK for EngTech <u>Top up for IEng with:</u> UWE or NTU Certificate in Traffic Engineering Bath HOT plus 30 degree credits 60 degree level credits Work-based Further Learning Two Further Learning projects
HNC in engineering started ≥ 1999	Apply for Graduate Member OR Associate Member if you have 5 years' experience OR Member if you have 10 years' experience	✓OK for EngTech <u>Top up for IEng with:</u> HND then follow routes above
An honours degree (eg BA Geography) (Ask IHE for a Career Assessment first)	Apply for Member if you have 2 years' experience (OR, Graduate Member if less experience)	<u>Top up for IEng with:</u> Technical MSc degree HNC Civils plus 30 '1' degree level credits or UWE Certificate
Senior EngTech	Apply for Member Or, Fellow with another 5 years' senior experience	<u>For IEng</u> , use the Technical Report option

---



## What qualifications do I have?

## To join IHE

## \*For Engineering Council Registration (See below for \*)

---

ONC, National Certificate, relevant NVQ3 or 4, National Diploma in engineering, University of Derby Asphalt Diploma or Bath Highways Open Tech Diploma

Apply for Associate Member if have 5 years' experience (OR, Graduate Member if less experience)

✓OK for EngTech

---

UWE or NTU Certificate, C&G Traffic Engineering, MANCAT road safety qualification

Apply for Associate Member if you have 5 years' experience

✓OK for EngTech

OR

Member if you have 10 years' experience

using the Individual Route

---

Lots of experience / no engineering qualifications

Apply for Fellow if you have 15 years' experience (5 at senior level).

✓OK for EngTech using the Individual Route

Apply for Member if you have 10 years' experience (3 with responsibility).

**For IEng and CEng** , use the Technical Report option.

Apply for Associate Member if have 5 years' experience.

---

- **Wherever a top up is stipulated for EC registration, another option is always the Technical Report Route.** This option allows you to demonstrate in a [Technical](#) Report, using one project or a theme, that you have knowledge of engineering principles to the benchmark degree level. It is not a description of your experience and excludes management knowledge. You prepare a Report, matched to the learning outcomes, which you present at an interview. A Professional Review then follows.

**Work-based Further Learning** allows you to show that you have extended your engineering knowledge up to the benchmark degree level drawing on your whole work experience probably combined with various short courses. Some companies have work-based learning programmes accredited by the JBM which run alongside initial training programmes. In a Further Learning submission you explain how you meet each of the degree level 'learning outcomes' adopted by the Engineering Council and supply back up evidence including assessments wherever possible. (Templates are available.) IHE assesses the submission and normally conducts an interview. Once successful, you apply for a standard Professional Review.

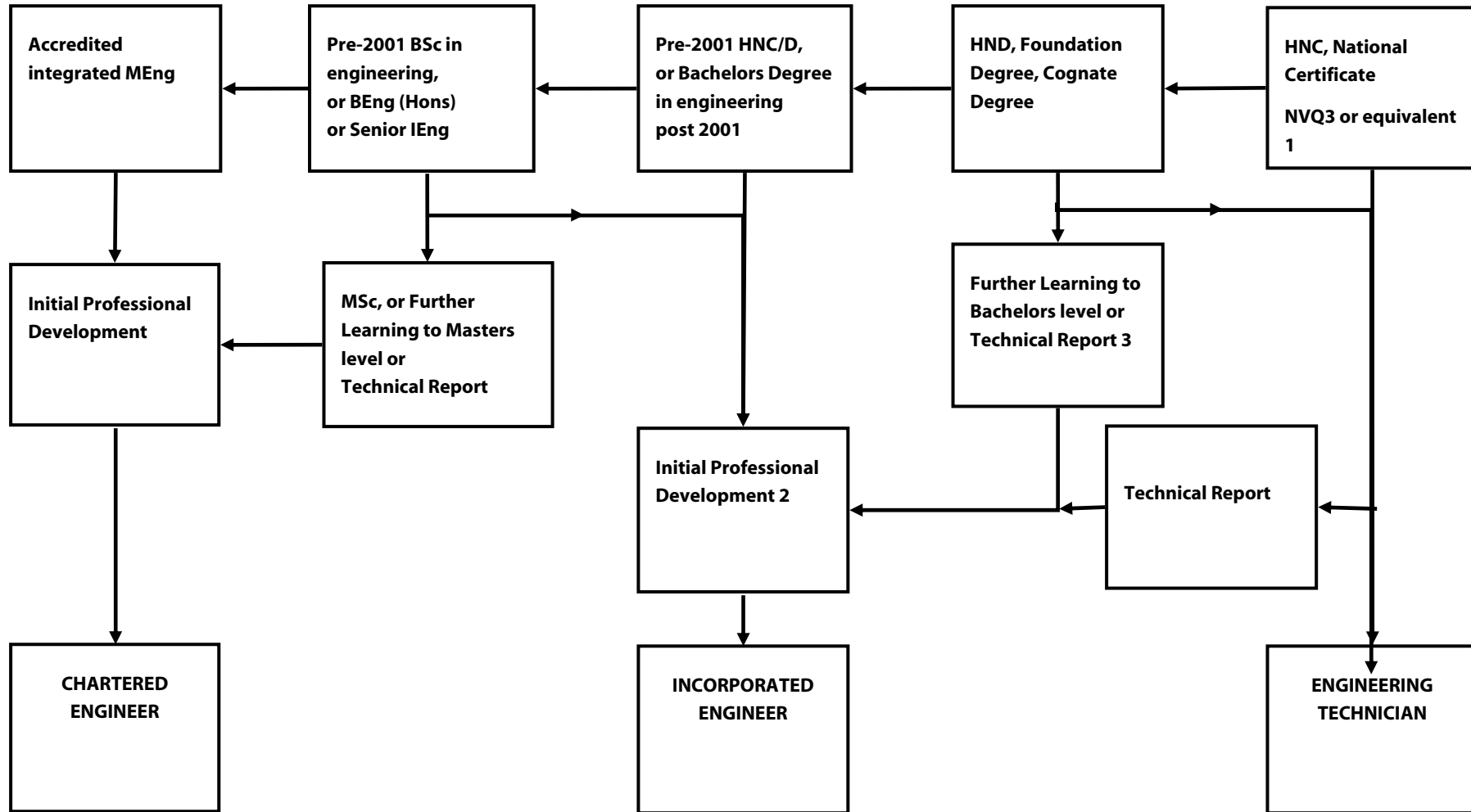


**Ask for a Career Assessment if you are uncertain.** Email [secretary@theihe.org](mailto:secretary@theihe.org) with:

- Your CV
- Copies of your academic certificates
- Lists of all units/ modules studied (and any syllabus details)
- A note of any final year project or dissertation



## WHAT ARE MY OPTIONS?



INSTITUTE OF HIGHWAY ENGINEERS

58 Russell Square,

London

WC1B 4HS.

t: 020 7436 7487

f: 020 7436 7488

[membership@theihe.org](mailto:membership@theihe.org)

[www.theihe.org](http://www.theihe.org)